

# FELIXTOOLS





Field of applications	4
Our Apps	6
<b>Logistikzentrale</b>	8
<b>FrachtGO</b>	12
<b>FelixGO</b>	16
<b>Delivery (incoming/outgoing)</b>	20
<b>SmartLog</b>	24
<b>Felix/Materialbuch</b>	28
<b>WorksGO</b>	32
<b>SmartFaktura</b>	36
<b>NaviGO</b>	40
<b>Contract &amp; Support</b>	48



## FELIXTOOLS

### **Your reliable partner in Gössendorf since 2014.**

Managing Director Raimund Ziegler is the driving force behind partnership, perspectives and versatility. We set international standards for digital management and demonstrate new potential for a more efficient, sustainable and future-proof forestry and timber industry every day. Since the founding of our company and the development of our first tool, we have focused on the needs of our users. Communication and structured data exchange, combined with maximum data security and individual adaptability, provide our customers with the basis for future economic success. We connect all manufacturers, suppliers and market participants with innovative solutions, knowledge, information and resources. We support all participants in the timber value chain in optimising their individual operations – regardless of type, size or philosophy, anytime, anywhere and with ease. Through modern technology and open interfaces, we

promote innovation and accessibility. It has always been important for us to rely on the latest but also established technologies. Whether Android or iOS, we support you from concepts to implementation to the use of your apps. Conquer the mobile world with it. Data and documents are bundled centrally in your database – from contract to invoices. When several parties are working together on a project, shared data communication is essential. FELIXTOOLS combines process with IT expertise.



We are transparent.

We are flexible.

We develop.

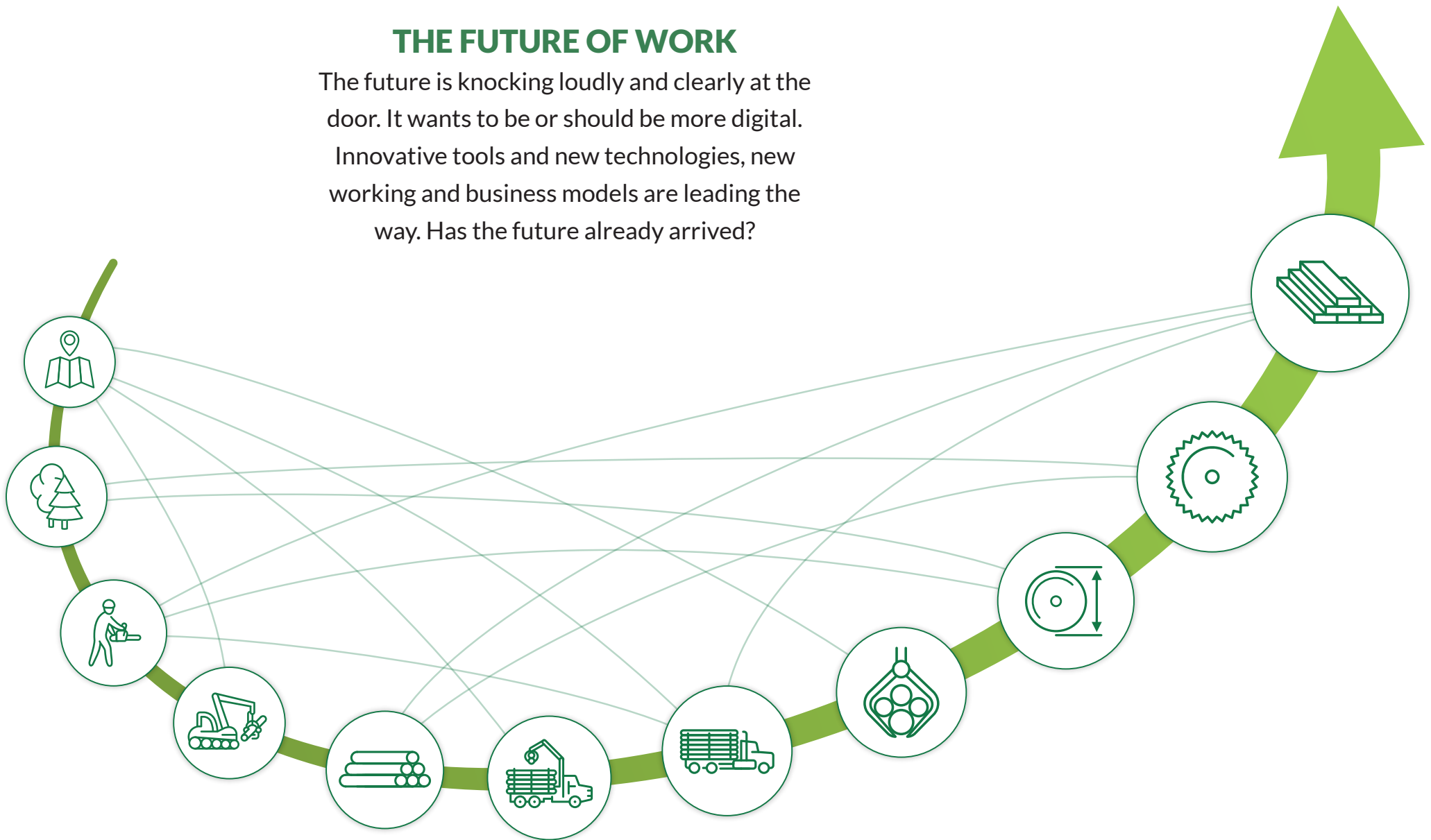
We have high quality standards.

We are competent and experienced.

## THE FUTURE OF WORK

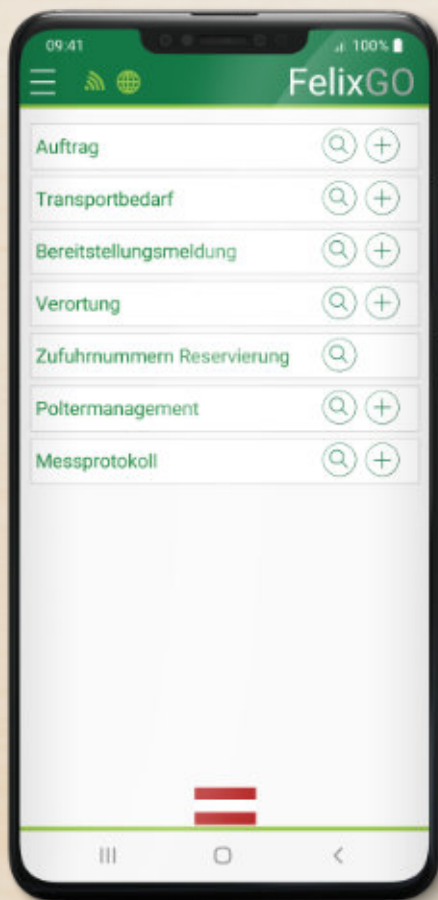
The future is knocking loudly and clearly at the door. It wants to be or should be more digital.

Innovative tools and new technologies, new working and business models are leading the way. Has the future already arrived?





## FelixGO

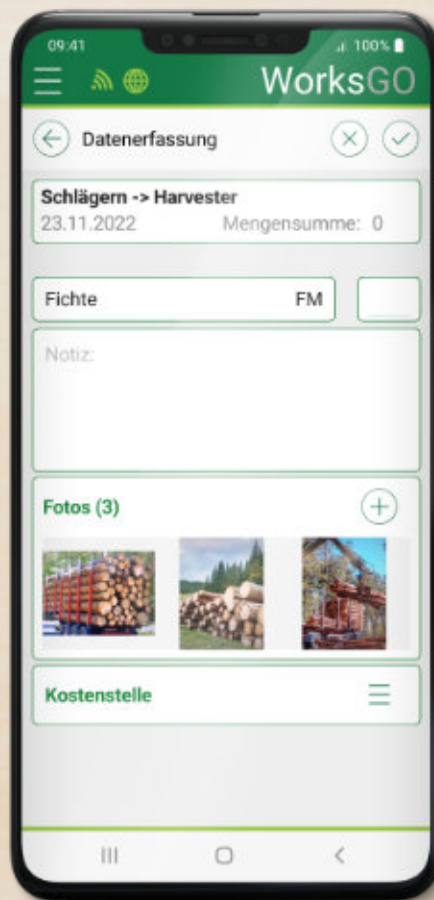


Commissioning | Transport requirements |  
Measurement protocol | Localisation |  
Supply number reservation | Woodpile  
management | Woodpile with digital map |  
Project management recording

more on page 16



## WorksGO

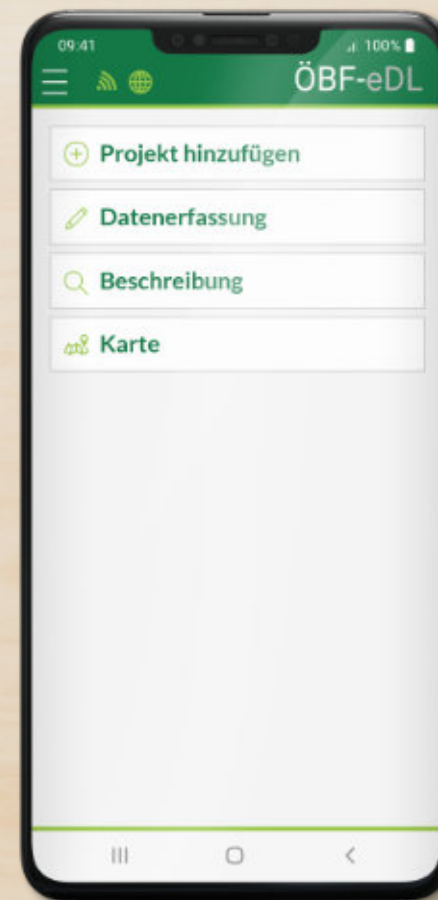


Agricultural and forestry services | Data  
collection | Project | Cost centre |  
Feedback

more on page 32



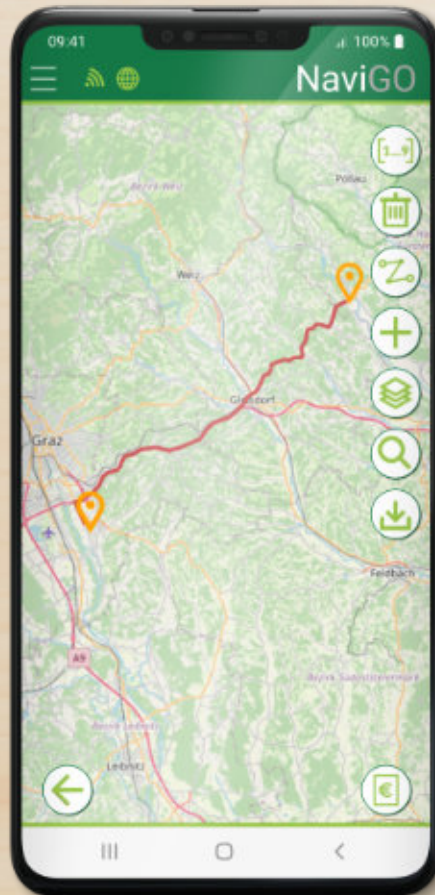
## ÖBF-eDL



Used by Österreichische Bundesforste |  
Forestry service provider app | Project |  
Data collection | Feedback



## NaviGO

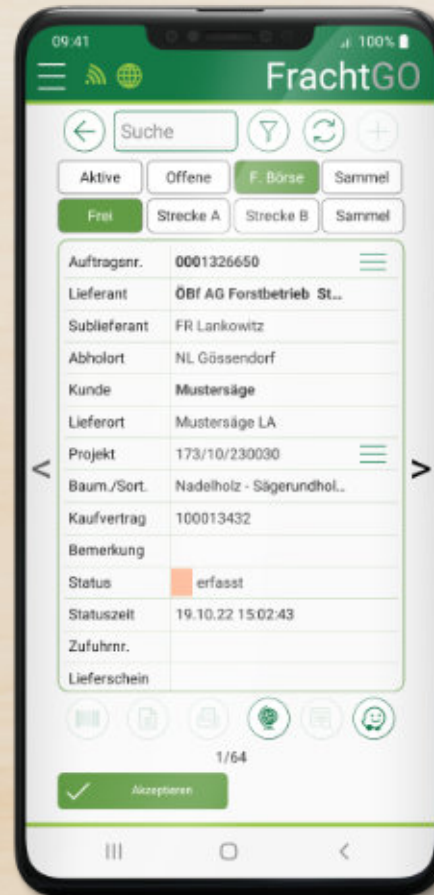


Digital transport cost calculation for lorries | Optimal route planning and calculation | Map display | Route display

more on page 40



## FrachtGO

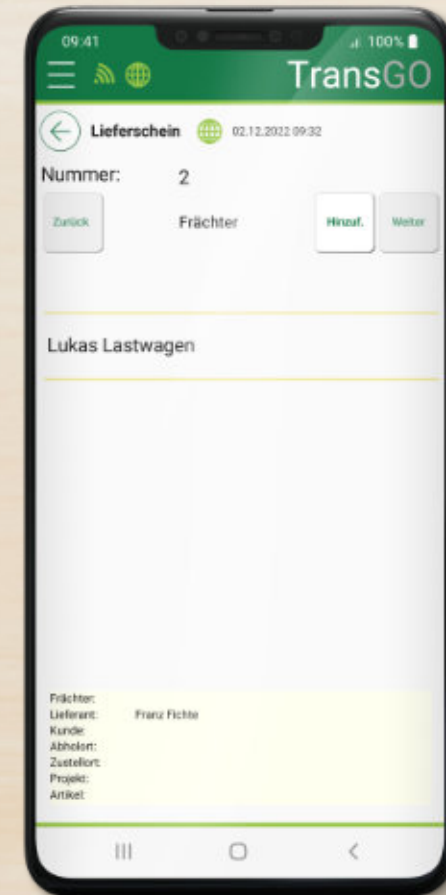


Mobility for transport | Perfect outdoor use | Data storage and synchronisation | Freight handling | Process optimisation | Electronic delivery note

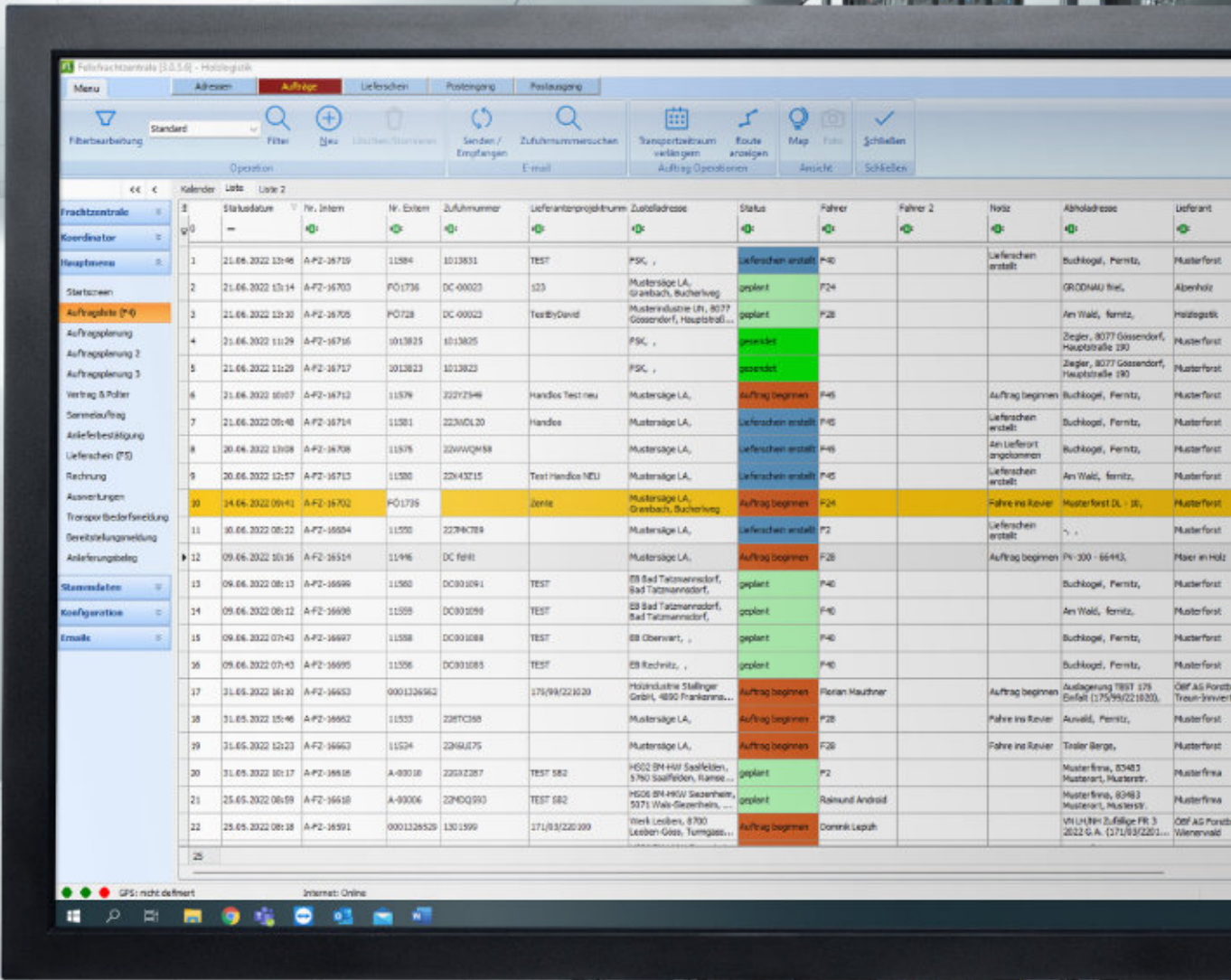
more on page 12



## TransGO



Create delivery notes | TransGO is an app that is used in Tyrol



# Logistikzentrale

Manage and control all logistics processes with Logistikzentrale.

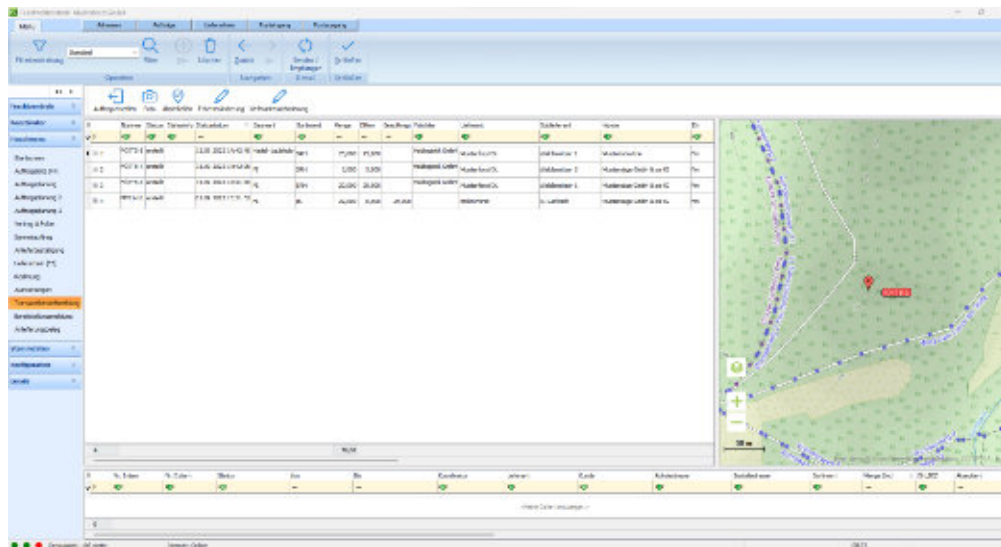
The term logistics stands for planning, management and control. What is new about logistics today is the multitude of technical solutions available, higher speeds, greater capacities (transport and storage) and increasing networking. In addition, there are a wide range of handling options resulting from control technology, telecommunications and information technology. Transporting timber from the forest to the factory is a demanding process with extensive requirements. The factory logistics department controls arrivals and departures, including the registra-

tion of goods movements, weighing and photographing of loads, and provides ongoing digital feedback. In the area of timber harvesting and preparation, provision alerts indicate what and how much has been harvested and when it will be available. In addition to these technical solutions, however, the cooperative and trusting relationship between all parties involved in the timber value chain is an essential factor for business success. The global timber market also requires new and flexible transport solutions from the forestry and timber industry.

Automation of storage and removal processes  
Increased efficiency  
Innovative transport systems

The Logistikzentrale provides immediate information on the progress of processes and the adjustment of subsequent planning and scheduling. The result is short turnaround times! Integrates and optimises processes from the contract with delivery profile management, timber col-

lection or timber takeover, woodpile management to delivery and takeover at the factory. The digital recording of all relevant data ensures efficiency and provides a constantly updated overview of processes and status.



**Users/industries:** Forestry, carriers, transport, logistics, timber trade, WWG, timber industry, materials industry, paper industry, recycling, agriculture, bulk goods, biomass plants, forestry cooperatives

Licence	month/year pay per use
Delivery and dispatch recording	●
Purchase and sales contracts	●
Delivery calendar	●
Transport orders	●
Delivery note management	●
Scheduling	●
Invoices/credit notes	●
Transport demand alert	●
Individual orders/collective orders	●
Residual quantity management	●
Map/Google Maps	●
Photos/barcodes	●
Address management	●
Transport period management	●
Transport log evaluation	●
Master data recording	●
Subcarrier	●
Contract & woodpile management	●
Automated message distribution	●
PDF printout of delivery notes	●
Platform	PC
Operating system	Windows (from Windows 10)

# LOGISTICS INDUSTRIES



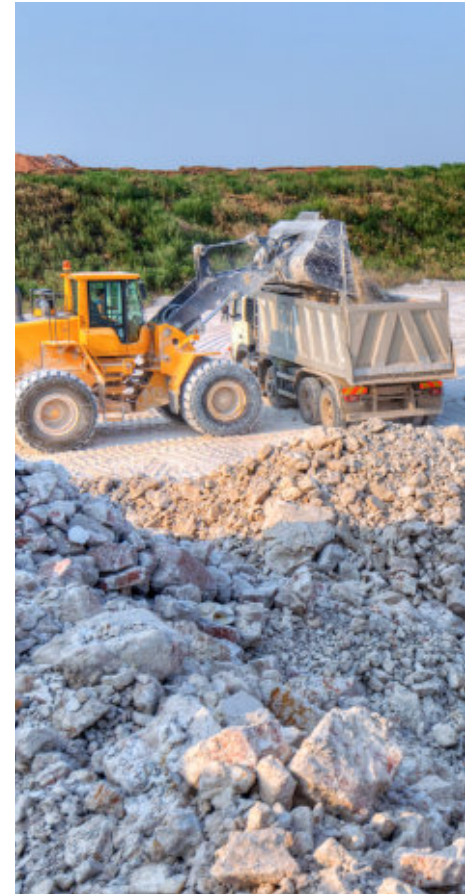
**Timber industry**



**Biomass**



**Pellets**



**Gravel**



# FrachtGO

It has never been easier to process transport orders via smartphones and tablets.

FrachtGO is a comprehensive mobile logistics app for optimising transport operations with a freight exchange, orders with or without supply numbers, status reports, delivery notes, semi-trailer transhipments, wagon loadings and map displays. The app provides detailed information based on the FHPDAT data exchange. The digital mapping ensures greater transparency and speeds up and facilitates process handling. FrachtGO can be used in conjunction with a Logistikzentrale, the web-based SmartLOG, or even individual carriers (without Logistikzentrale and SmartLOG). Depending on the organisation, the app

accesses the freight exchange to process transport orders. Status messages are sent and delivery notes are created. For semi-trailer transhipments, dispatching and wagon loading, the app provides a map display. Depending on the organisation, the app accesses the freight exchange to process transport orders. Status messages are sent and delivery notes are created. FrachtGO is an essential tool for semi-trailer transhipment, disposition and wagon loading, with a generous map display. This speeds up your digital transformation. All involved parties are informed about the processes and status in real time.



---

### FrachtGO *Free*

suitable for carriers whose partners place orders digitally to learn about the system. Therefore, only a limited number of delivery notes per month are approved.

---

### FrachtGO *Single carrier*

is a solution for drivers of carriers without a Logistikzentrale. Orders are sent directly to the app and available in digital form to all involved parties. The carrier uses the app to create the electronic

delivery note. Clients receive real-time status updates on all recorded deliveries, allowing them to optimise their processes. More efficient processes reduce your logistics costs.

---

### FrachtGO *Professional*

is the version for all drivers in connection with a Logistikzentrale. All involved parties are informed in real time about processes and status. Access to freight exchange, processing transport orders, status messages, creating delivery notes, semi-trailer reloading,

wagon loading and map display. The app provides detailed information based on the FHPDAT data exchange. The digital mapping ensures greater transparency, speeds up and simplifies process handling.

---

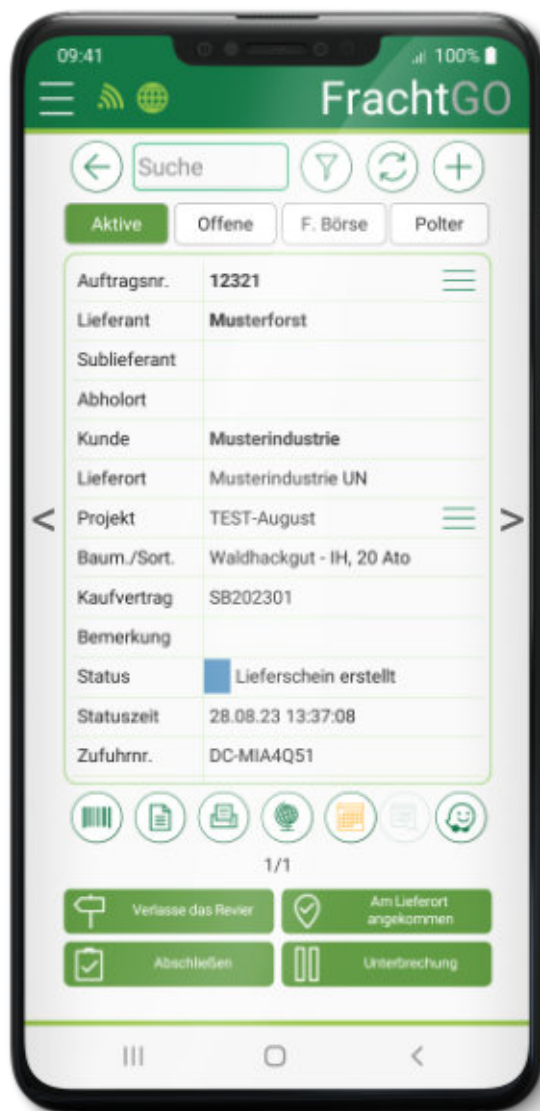
### FrachtGO *SmartLOG*

is for drivers of carriers connected to our SmartLog solution. SmartLog is a logistics programme with freight exchange integration. Electronic orders can be picked up and processed. It provides an overview of delivery notes and integration with FrachtGO. SmartLOG is an operating system-independent web application.

Drivers access the freight exchange and transport orders can be processed. All involved parties are informed via status messages. The smart link between PC and app allows to enter drivers into the system directly.

---

**Users/industries:** Carriers, transport, logistics, timber trade, WWG, timber industry, materials industry, paper industry, recycling, agriculture, bulk goods, biomass plants



Smart and digital.  
Tools for the future

	FrachtGo <i>Free</i>	FrachtGo <i>Single carrier</i>	FrachtGo <i>Professional</i>	FrachtGo <i>SmartLOG</i>
<b>Licence</b>	free	month/year pay per use	month/year pay per use	pay per use
Monthly delivery notes	limited	unlimitiert	unlimitiert	unlimitiert
Electronic orders and delivery notes	●	●	●	●
Delivery notes can be edited	●	●	●	
Scheduling	●	●	●	●
Master data entry	●	●	●	●
Various language options	●	●	●	●
Offline function	●	●	●	
Automated message distribution	●	●	●	●
Photo function	●	●	●	●
Route display with online or offline maps		●	●	●
Slot booking		●	●	●
Waze / navigation		●	●	●
Virtual order		●	●	●
Order number / barcode / QR code		●	●	●
Freight exchange			●	●
Delivery note creation from woodpile			●	●
External order pool			●	
Semi-trailer transshipment			●	
Connection to Logistikzentrale			●	
Connection to SmartLog				●
Operating system	Android, iOS	Android, iOS	Android, iOS	Android, iOS, Web



# FelixGO

FelixGO is a mobile app connected to the Logistikzentrale.

Users benefit from FelixGO: it allows them to create freight orders with or without a supply number. FelixGO offers perfect integration with a delivery notification, woodpile management, GPS coordinates

and much more. This highlights the app's relevance as part of standardisation concepts. Digital data entry is carried out using convenient entry masks and clear display representations.



Licence	month/year
Interface	Felix Logistikzentrale
Order creation / Carrier selection / Customer selection / Supplier selection / Sub-supplier / Pick-up location / Map / Items / Assortments – Tree type / Unit of measure / Project / Interval – Time period / Notes / Photos	●
Transport requirements	●
Provision notification	●
Measurement protocol	●
Localisation or determine access and departure	●
Supply number reservation	●
Multilingual	●
Data export as XML	●
Woodpile management	●
Digital woodpile map	●
Woodpile photos	●
Temporary offline operation	●
Operating system	<b>Android</b> (from version 6.0) <b>iOS</b>

- Compliant wood data collection
- Customised configuration
- Preloading of address and master data
- All common types of data collection

**Users/industries:** Forestry, transport/carrier, timber trade/WWG, technical offices, timber industry, materials industry, paper industry, recycling, agriculture, bulk goods, biomass factories



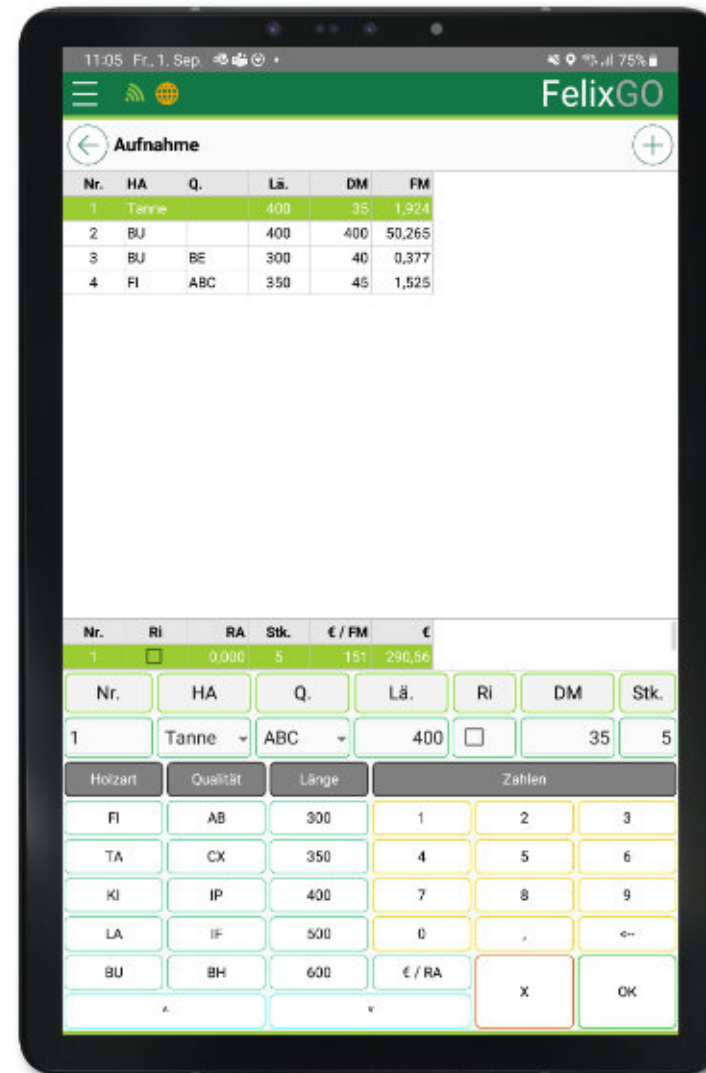
### Commissioning/project planning

- Transport commissioning
- Provision alerts
- Delivery authorisations
- Project setup
- Woodpile management
- Map integration (terrain/satellite)



## Woodpile management

- App for woodpile recording and provision alert
- Digital woodpile map
- Reference measurement (number of items and volume)
- Woodpile photos



## Measurement report

- Individual tree recording
- Customer
- Supplier
- Sub-supplier
- Carrier
- Recordings/photos
- Information



# Delivery (incoming/outgoing)

Increased flexibility, optimize throughput times, cost minimisation

Coordinated delivery, digital registration and photo documentation upon arrival with self-handling by the supplier, as well as direct software connection to the scales and dry weight determination, reduce personnel and administrative costs. Seamless and digital recording in real time ensures fast and comprehensive evaluations of quantity and quality. Structured data exchange for efficient control of your receiving facility. Software tailored to the needs of the materials and energy industry automatically generates all order documentation along the entire information chain. No downtime, as you are informed about the status and quality of deliveries in real time. The deliv-

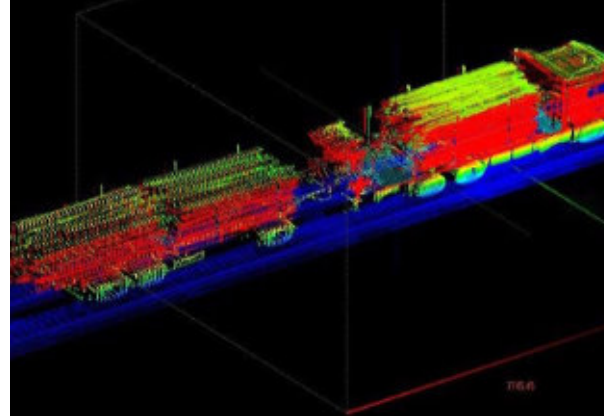
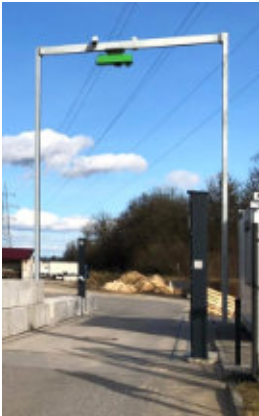
ery planning lists all existing contracts as standard and is used to create delivery numbers and add new contracts. Delivery numbers can be created and sent in advance for many weeks, which enables the planning of deliveries. Furthermore, special e-mail dispatch rules can be defined generally and for individual contracts. Standard documents can be created and edited here. Our service helps you manage complexity and accelerate your development while integrating your existing tools and using state-of-the-art methods. Complexity grows and you get a consistent functional view of your product.





Functions	
Self check-in, arrival and departure registration	●
Resource management	●
Online/offline Local data storage and synchronisation via web service with the higher-level Logistikzentrale	●
Gate-related slot management	●
Weighbridge connection	●
Barrier control	●
Sliding gate control	●
Traffic light control	●
Remote display management	●
Receipt printing control	●
Multilingual	●
Configurable control functions Overloading Weight deviation Dwell time	●
Operating time management	●
SMS gateway	●
App push message	●
Interface to Smartlog carrier and app management	●
Hardware connection	●

**Users/industries:** Transport, logistics, timber trade, WWG, technical office, timber industry, materials industry, paper industry, recycling, agriculture, bulk goods, biomass factories

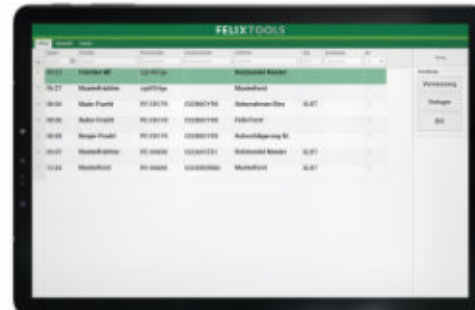
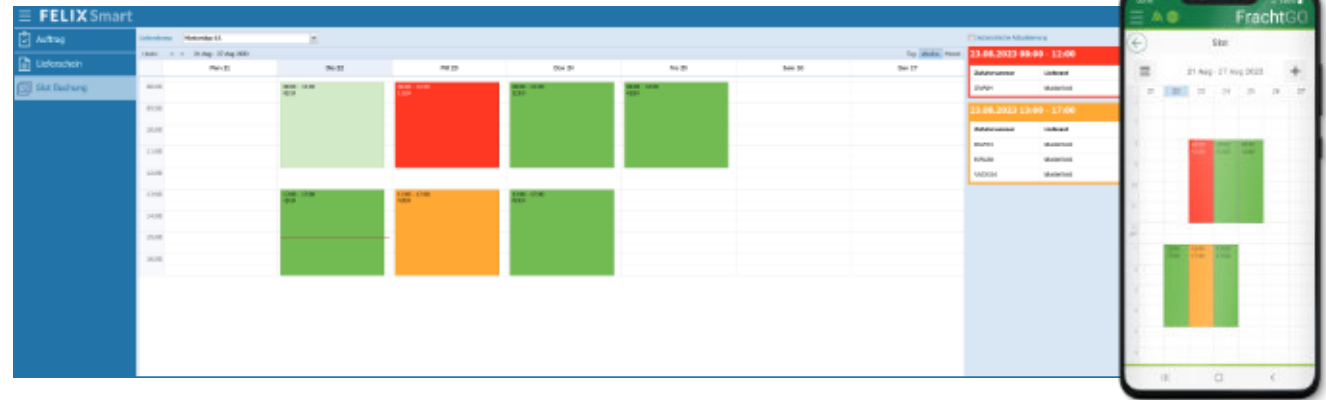


## Delivery registration

- Terminal registration
  - Licence plate recognition
  - Code scanner
  - Touchscreen
- Weighing
- Room dimension scan
- Load photography
- Gate and barrier control
- Digital weighing receipt

## Capacity information SLOT management

- Capacity planning for loading and unloading areas
- Utilisation overview for suppliers, carriers and employees
- SLOT reservation
- Web & app application



## Loading and unloading point allocation

- Mobile tablet application
- Traffic light and remote displays
- SMS notifications



# SmartLog

## Planning for carriers – optimisation – provision – dispatching

SmartLog provides an overview for carriers and drivers. Data is transmitted at the touch of a button and is immediately available to the driver. This enables us to create a better overview and better control for all carriers. SmartLog is a logistics programme with freight connection. The transport of timber is a demanding process with extensive requirements. SmartLog offers planning, coordination, implementation and control. Partner companies can, for example,

search for freight in the SmartLog freight exchange through an interface. With many years of logistics experience, we can provide optimal support in all areas of the production chain. A functional, coordinated process chain is therefore an important cost factor in value creation for all partners.



With SmartLog, you have a logistics concept for planning, implementation and transport organisation that is matched to your needs.

Licence	month/year pay per use
Registration	●
Electronic orders / delivery notes	●
Supply numbers / barcodes	●
Photos	●
Notes	●
Freight exchange	●
Dispatching	●
Overview of all delivery notes	●
Integrated FrachtGO	●
Management of driver names, vehicle registration numbers and mobile devices	●
PDF delivery notes	●
Web application	●
No server required	●
Operating system	Web- applikation

Yes, the world is becoming increasingly digital – and so are we.



**Users/industries:** Carriers, transport, logistics, timber trade

# Opportunities – Benefits – Solutions

## Our challenges in the market:

- Fast and efficient processing
- How to remain flexible when changes occur
- Different requirements
- Complexity makes development a challenge
- Building a networked future



Here you will find more information about our developments.

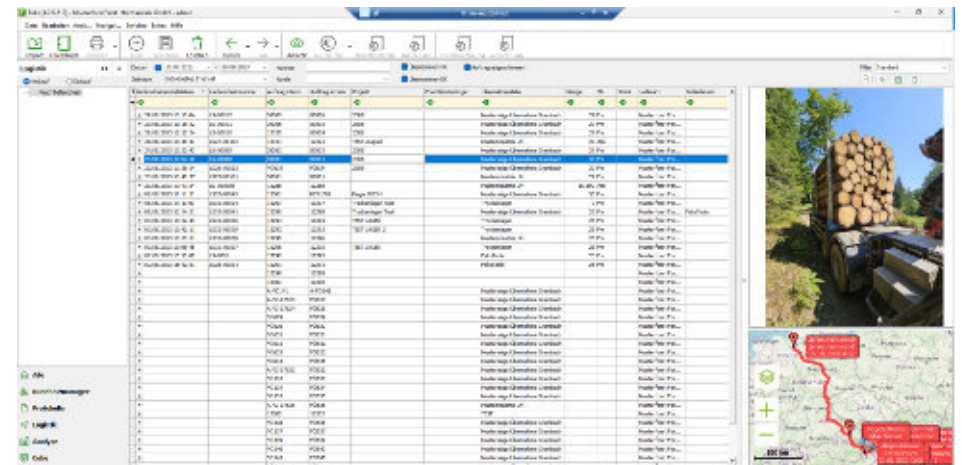




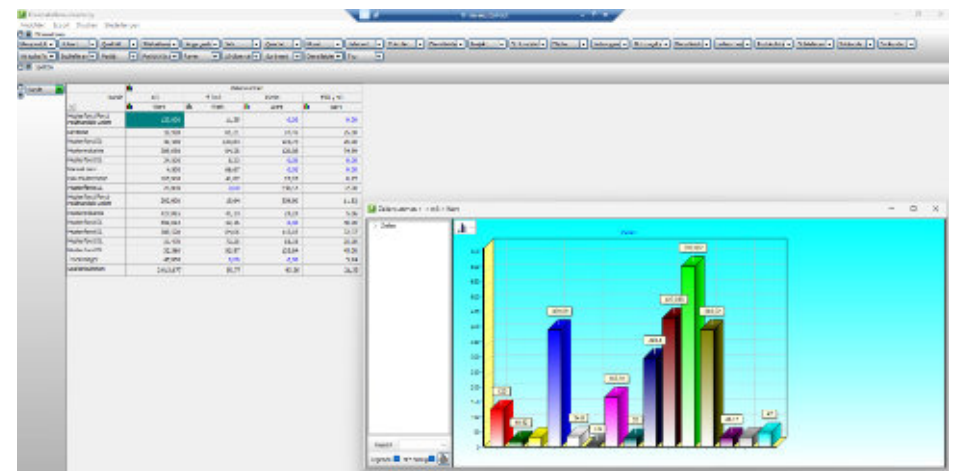
In addition to the functions of the Felix Materialbuch Basic version, Felix Materialbuch offers a wide range of analysis and evaluation options. You can use it to analyse all your timber deliveries with just a few clicks. The system provides you with detailed information on individual quantities, assortment distribution, shaping errors and much more. You can display the results as tables or diagrams. You can also create and check invoices with just a few mouse clicks. A special feature is the log manager, which manages

Felix/Materialbuch is a solution with various tools for billing, warehousing and all important processes in forestry. Constant enhancements ensure that it is always up to date. The ideal mapping of relevant business processes using meaningful statistics and key figures makes our software the perfect tool. Felix is a forestry management system that is perfect for any forestry company and forms the basis for your timber business.

	Materialbuch <i>Basic</i>	Materialbuch
Licence	free	month/year
Analysis of timber deliveries (based on FHP protocols received from the timber industry)	●	●
Ensures continuous quality control	●	●
Recording of all timber deliveries	●	●
Quantity balance		●
Detailed evaluation options		●
Assortment distribution		●
Diagram display		●
Creation and verification of invoices		●
Management of contracts		●
Management of service contracts		●
Project management		●
Platform	PC	PC
Operating system	Windows	Windows



- Purchase and sales contracts
- Delivery notes
- Measurement reports (individual stock, total volume)
- Revenue and cost calculation
- SmartFaktura interface
- Accounting interface
- Service provider notification



**Users/industries:** Forestry, forestry service providers, technical offices, forest owners, forestry operations, timber merchants, foresters

# Technology connects people and nature

The connection between the real and digital worlds enables the seamless integration of the entire value chain, from design to implementation, while a continuous flow of data enables constant optimisation. Digitalisation and automation are the levers for overcoming the challenges of today and tomorrow. We actively work with customers and partners to develop the best solutions.

## FELIXTOOLS

- Customised software solutions for the timber and forestry industry
- Delivery and dispatch via direct software connection
- Mobile apps for Android and iOS
- Forest management through sample inventory
- Optimisation of sustainable production through digitalisation





# WorksGO

## Feedback tool for agricultural and forestry services

Mobile timber harvesting report in conjunction with Felix Materialbuch. Once the work is complete, the service provider can enter the information requested by the employer, add images, and report back to the employer. Download and activate from the Play or App Store. Username and password from Felix Materialbuch. Projects are displayed in a list. After selecting a project, quantities can be entered and checked, and assortment-related services can be documented.

Data is also saved without an internet connection and then sent as soon as possible. Information is sent to the employer. After selecting the project, you can record and check quantities, as well as sort. The system provides you with detailed information on individual quantities and assortment distribution and is project-related. This ensures continuous quality control and documents your quantity balances in detail.



## The feedback tool for a successful day.

The WorksGO app is used to log the daily work performed by a forestry worker. The app consists of data collection, which is used to document the work, and a description of the individual tasks. Data

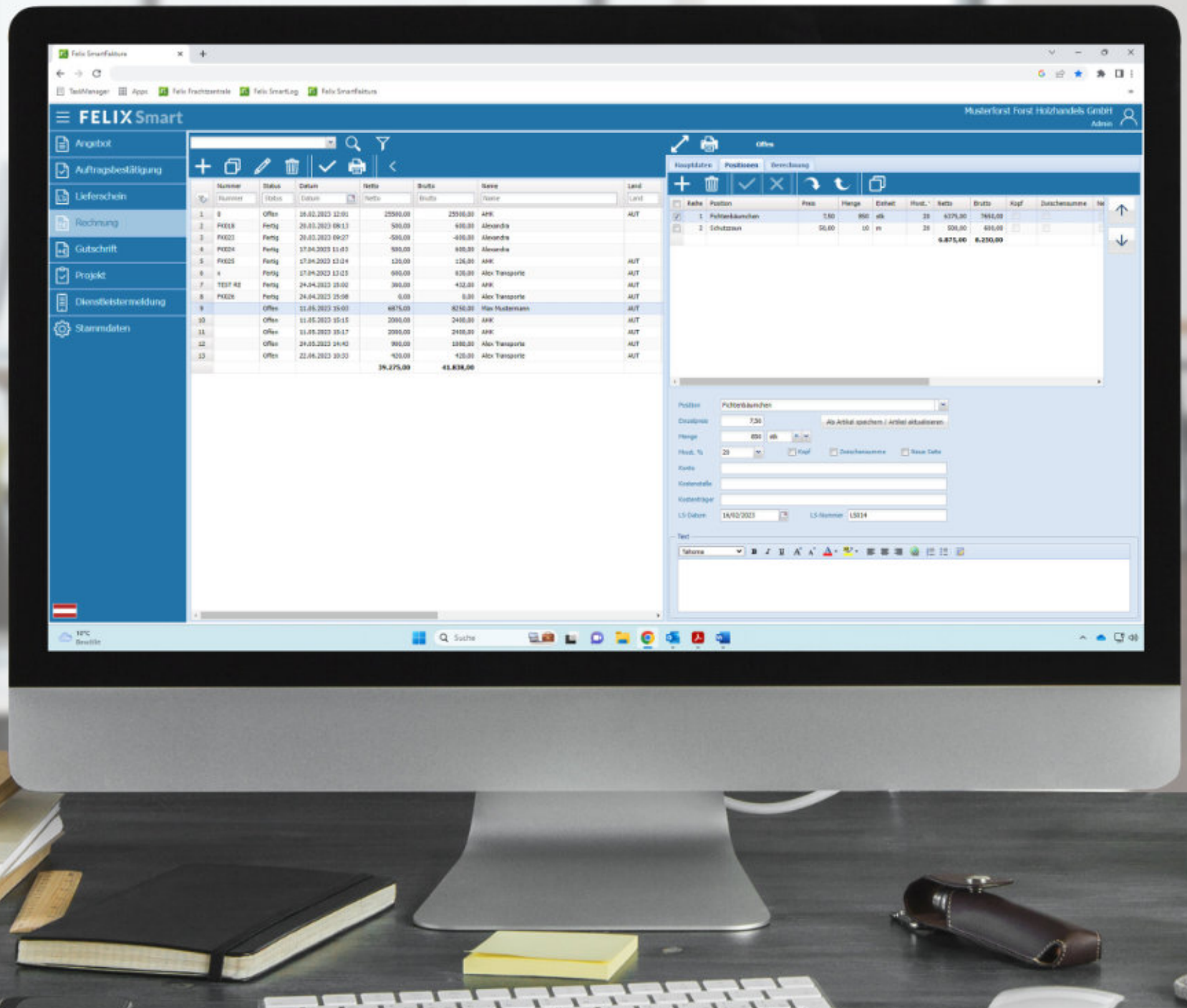
collection documents the work performed on the various projects in which the forestry worker is involved. Our tools support you in ensuring a smooth workflow.

Licence	month/year
Interfaces	<b>Materialbuch</b>
Projects / Data collection / Description	●
Assortment distribution (logging, transport, forwarder, harvester)	●
Manage photos	●
Cost centre	●
Record operating hours and quantities	●
Temporary offline operation	●
Feedback function	●
Multilingual	●
Operating system	<b>Android</b> (from version 6.0)



**Users/industries:** Forestry, forestry service providers, transport/logistics, timber trade/WWG, technical offices, timber industry, materials industry, paper industry, recycling, agriculture, bulk goods, biomass factories





# SmartFaktura

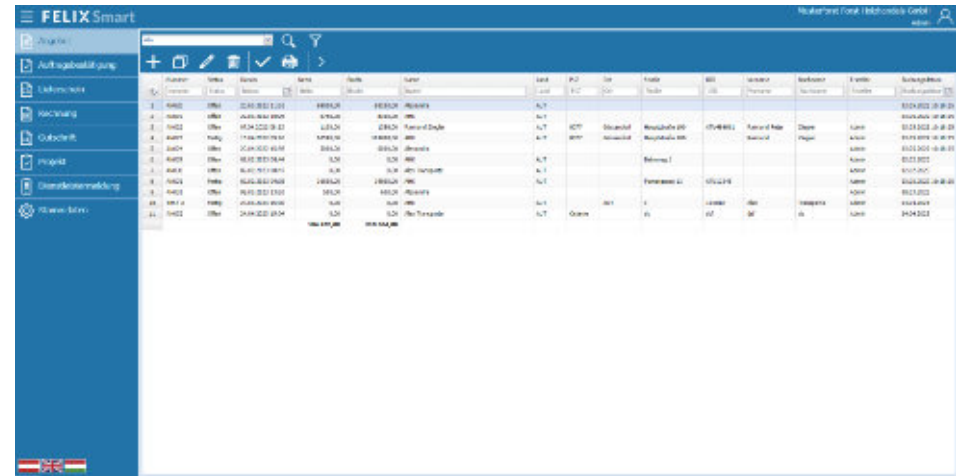
The software for managing and paying all service providers, suppliers and customers. A solution tailored to medium-sized businesses. Automate your prepared accounting.

SmartFaktura adapts flexibly to the requirements of your company and your employees. Create professional invoices online that can be customised. Send us your logo or letterhead, and we will upload your own fonts and logo and customise the appearance of your invoice template according to your specifications. You can handle your quotes, order confirmations,

credit notes, and invoices professionally, efficiently, and transparently. SmartFaktura adapts to your business processes. Simplify your collaboration with service providers, suppliers and customers. It was important for us to have a system that really works together, and it has proven itself. Save time by managing efficiently.

SmartFaktura is a multi-user, web-based extension of the tool Felix and enables the free creation of quotations, orders, delivery notes, invoices and credit notes. The web app is accessible from your network.

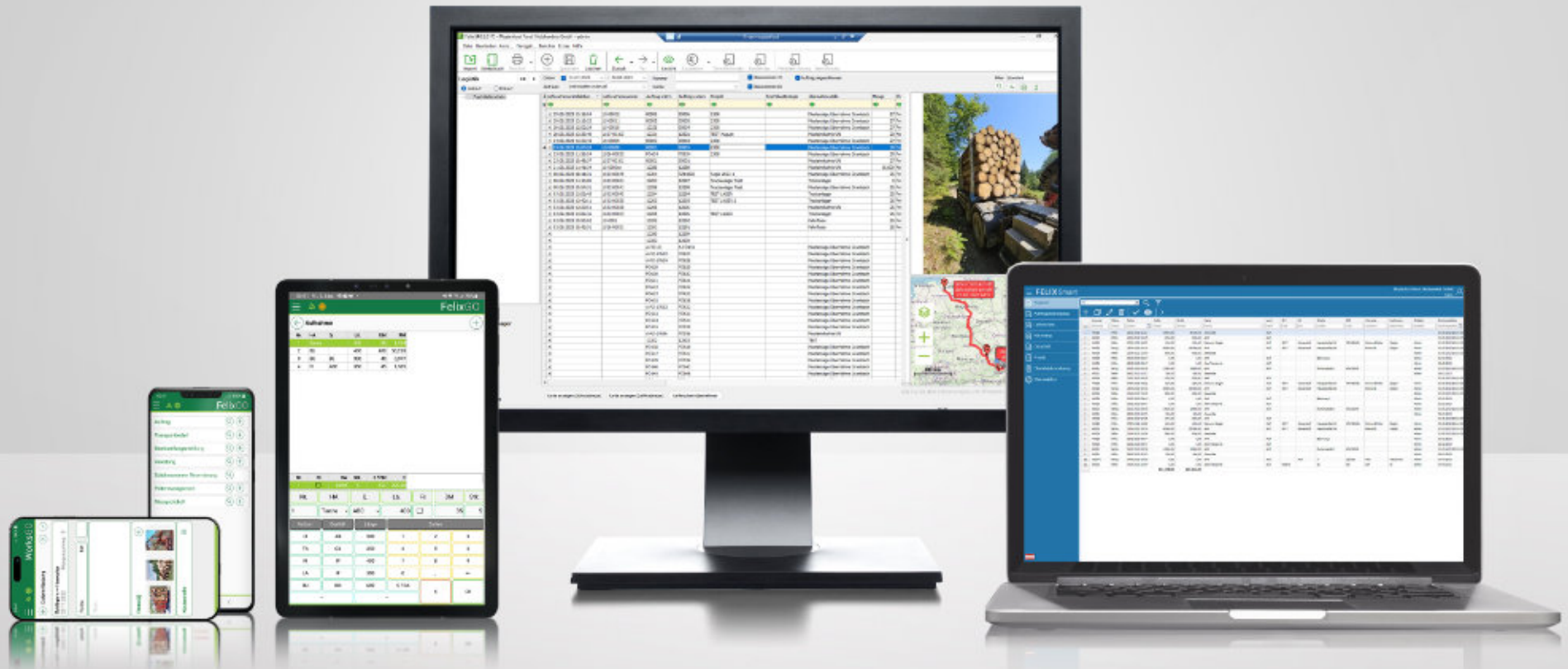
SmartFaktura menu system	
User data	●
Editing the date filter	●
Selecting from saved data filters	●
Searching according to data filter	●
Quotation	●
Order confirmation	●
Delivery note	●
Invoice	●
Credit note	●
Project	●
Service provider notification	●
Master data	●
PDF printing	●
Articles	●
Preamble/closing text	●
Items	●
Number range	●



- Individual invoice content despite standardised invoice texts
- Sequential invoice numbering
- Create your own items and services
- Free email dispatch
- Recurring invoices, delivery notes and order confirmations can be copied using the copy function
- Invoice draft for preliminary checking

**Users/industries:** Forestry, forestry service providers, technical offices, forest owners, forestry operations, timber merchants, foresters

# FELIXTOOLS



App



Desktop



Online



A white semi-truck with a long trailer is driving on a multi-lane highway. The trailer has the words "FELIX TOOLS" printed on it in large, bold letters. The truck is moving from left to right. The background shows a blurred landscape with green fields and some buildings in the distance. The sky is clear and blue.

**FELIX TOOLS**

# NaviGO

## Tour calculation for lorries

In order to plan and calculate your truck routes correctly, you naturally need to know how much the route will cost your company. After entering the values, you will receive the calculated costs and kilometres for the route calculation. This allows you to calculate the cost price of transport orders for specific routes. NaviGO is an app for freight cost calculation – routes are calculated and displayed. No more estimates. You receive precise and reliable information

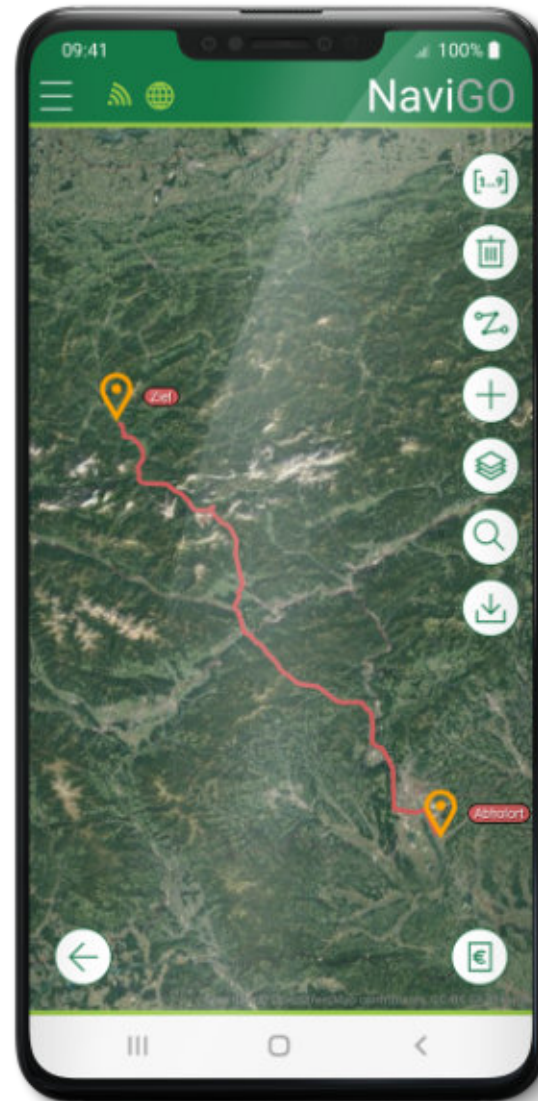
on freight costs by entering the diesel factor, tolls, loading time, hourly rate and loading volume. The calculated transport costs are also the ideal basis for your contribution margin calculation. The route calculation with the map can be printed out as a PDF. Simple – fast – reliable – clear and professional! Route calculations with just a few clicks save time and money.



## Digital transport cost calculation

### Accurate route calculation for lorries

Licence	pay per use
Function	route calculation
Length of transport route	●
Freight costs	●
Toll distance	●
Loading time	●
Diesel factor	●
Loading volume	●
Total duration/time	●
Hourly rate	●
PDF printout	●
Map display	●
Operating system	Android/ Android Tablet

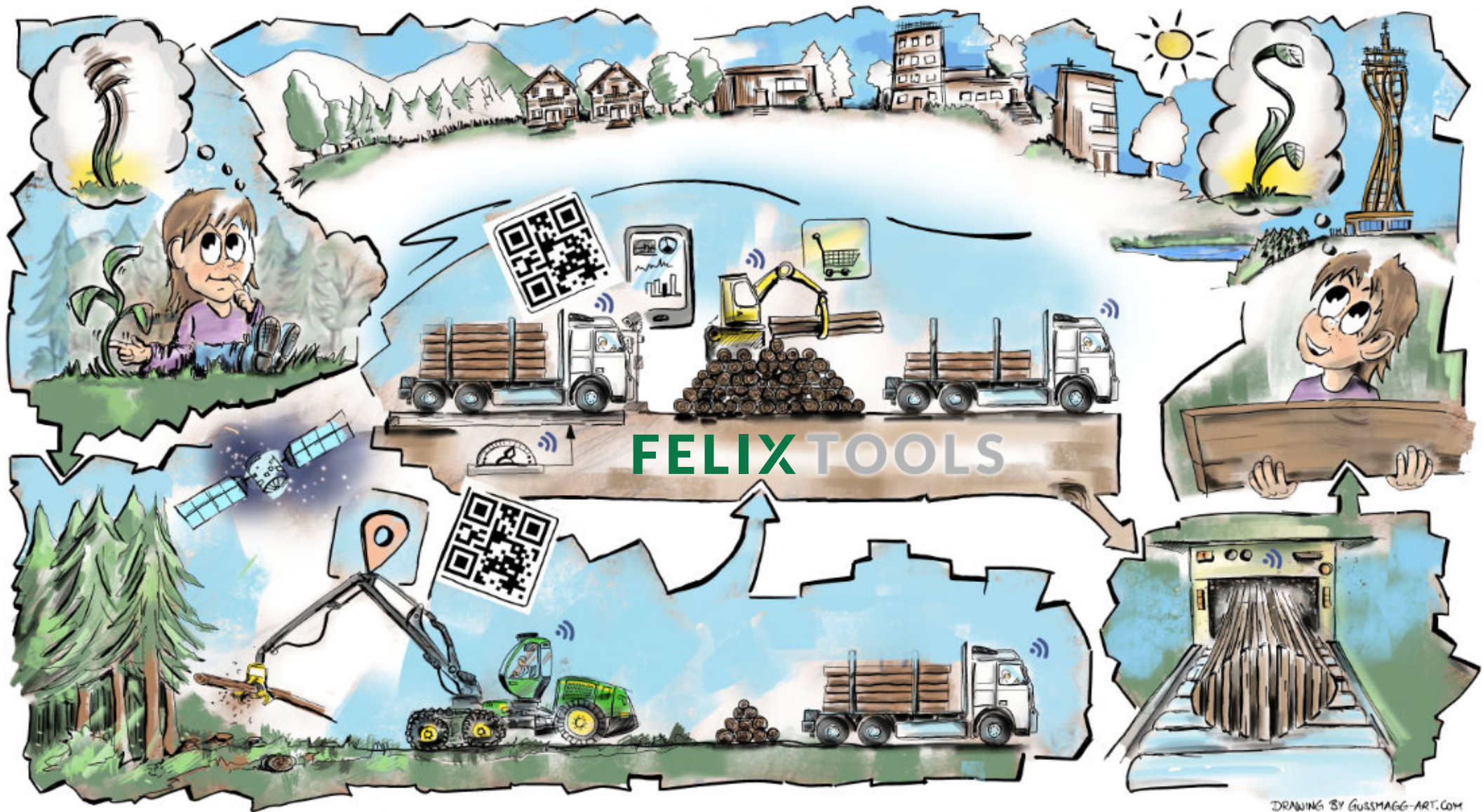


### Your advantages:

- Accurate and fair billing
- Planning
- Possible data transfer
- Provides an overview of routes and freight costs
- Mobile data entry
- Map display
- Printout (PDF) of route calculations
- Optimal route planning and calculation

**NaviGO, the ideal solution!**

**Users/industries:** Forestry, forestry service providers, transport/logistics, timber trade, WWG, technical offices, timber industry, materials industry, paper industry, recycling, agriculture, bulk goods, biomass factories













FELIXT  
www.felixtools.at

FELIXTOOLS

**FELIXTOOLS Ges.m.b.H.**

Hauptstrasse 188

A-8077 Gössendorf

Phone: +43 (0) 3135 48271

E-Mail: office@felixtools.at

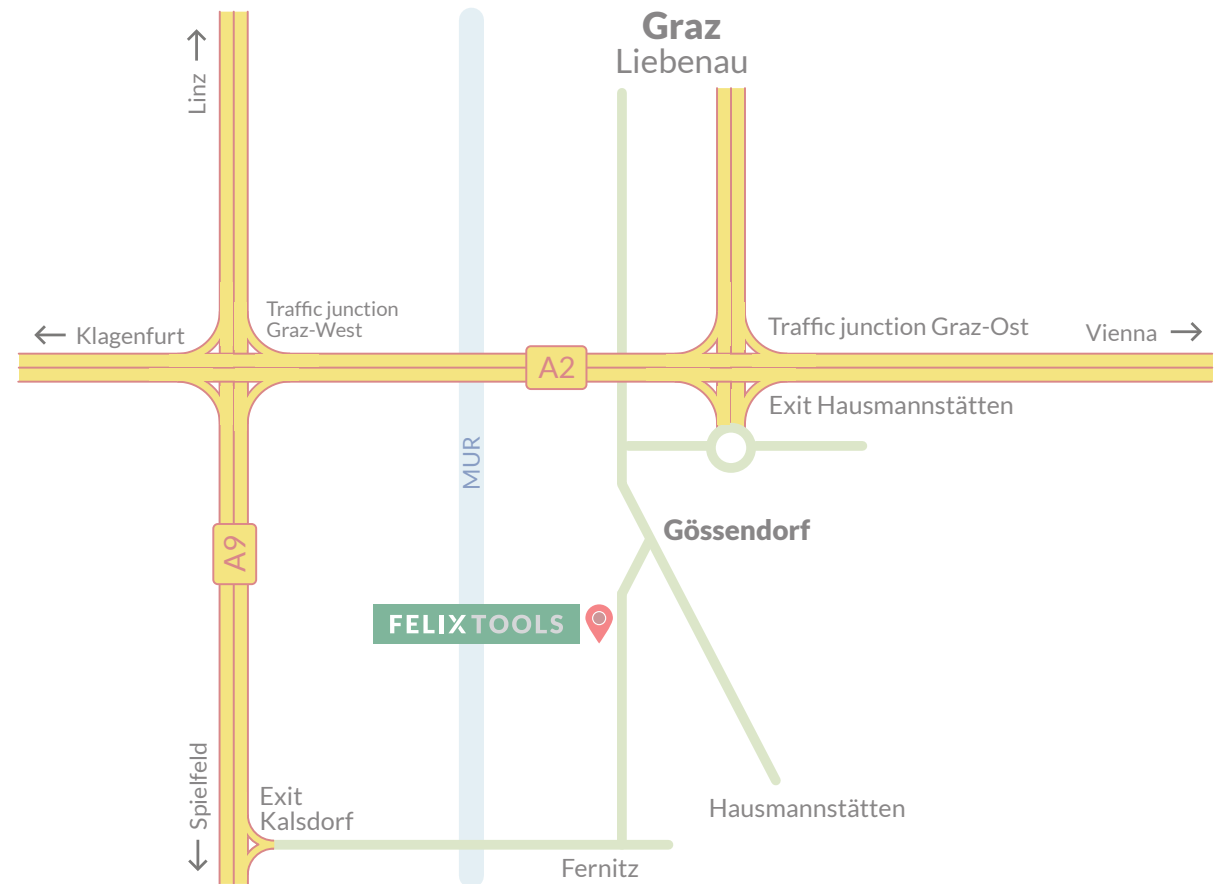
**Support hours:**

Mo – Thu: 7:30 – 16:00

Fr: 7:30 – 12:00

and by arrangement

Support-E-Mail: support@felixtools.at

[www.felixtools.at](http://www.felixtools.at)



[www.felixtools.at](http://www.felixtools.at)